



GIS/IT OUTSOURCE SERVICES

A Short Introduction

Processes to efficiently and accurately digitize, analyze, annotate, verify, model, and maintain comprehensive databases integrating geographical, architectural, governmental, and business information into precise and complete meta-data electronic representations. Its proprietary databases are available for multiple online and offline uses by businesses, consumers, and governments.

Pakistan/Production Office:

Contact: **M Naveed Saeed**

Address: 61-R, PGECHS-I, Near Wapda Town, Lahore, Pakistan

Phone: +92-322-4296004 | Email: mnaveedsaeed@HSBroSol.com | Skype: mnaveedsaeed

UK/Marketing Office:

Contact: **Syed M Shah**

Address: 68 Toddington Road, Luton, LU4 9DY, United Kingdom

Phone: +44-7460-119919 | Email: InfoUK@HSBroSol.com

USA/Marketing Office:

Contact: **Arfeen Ijaz**

Address: 4 Winding Ridge Rd, Lake Hopatcong, NJ 07849, USA

Phone: +1-646-417-3233 | Email: Info@HSBroSol.com

About us

HS Bro. Solutions® is a GIS corporation with Production Office in Lahore, Pakistan and Commercial Offices in St Albans, UK and NJ, USA. Founded in 2015 and managed by Hina Saeed & Muhammad Naveed Saeed with an experienced team which is already been in this domain for 20+ years.

HS Bro. Solutions® perfected each step of the acquisition and modeling processes to achieve very competitive results in a minimum of time without sacrificing quality. Over the last few Years, HS Bro. Solutions® designed and developed its own IT infrastructure and hired and trained its workforce to scale up quickly (even when a project involves tens of thousands of physical entities around the world) and to enable frequent verifications and changes to the meta-data to reflect changes in actual entities maintained in its databases. HS Bro. Solutions® can adapt quickly its formats and schemas to match the specific needs of its clients.

HS Bro. Solutions® is a customer-focused company. We have a strong track record of repeat business from our clients while continuing to win new customers on a consistent basis. Our long-term, time-built relationships with our customers based on confidence and trust are the result of our demonstrated performance in technology fields, industry-specific expertise, product knowledge, along with proven consulting and project management methodologies for each customer and engagement.

HS Bro. Solutions® Methodology:

The key of the success of the project passes by the functional organization and also through the constant dialogue between HS Bro. Solutions® and the Customer. This essential communication will be application by the average following:

Plan of the total project on PERT or another means of management and presentation detailed with the Customer so that the two parts develop a culture of the project together, vocabulary, practices of work, practices of communication, transmission of formal information and semi-formal etc. A detailed review of the objectives, cut off dates, deployments of means as of the types of difficulties of envisaging will be made before the beginning of work.

The identification of the decision makers and persons in charge for the Customer HS Bro. Solutions® and will be confirmed with the starting of the project. It will also be determined at that time frequency coordination meetings, meetings of deliveries, magazines and quality.

HS Bro. Solutions® prepare a checklist of items for discussion to develop the best solutions tailored to the specific circumstances of the project.

Customer Support Team:

HS Bro. Solutions – GIS/IT Outsource Services

The interface between the daily Customers HS Bro. Solutions® and production is carried out by a dedicated team.

This team is available every day from Monday to Saturday, by mail or telephone. Each project is within the team by a project manager who personally control:

- receptions
- deliveries
- questions and answers between production and Client
- studies and specific development related to the project
- updating of databases tracking project.

Project manager is also responsible for the possible outbreak and monitoring of any escalation hierarchical, following any difficulty unresolved at his level.

Key Offerings

GIS Data Services

We offer Batch vectorization of survey maps that maybe of Cadastral, Digitization of urban development and zoning plans (zoning, networks, planning regulations), Photogrammetric restitution, Resetting and continuous assembly of maps to ensure a geographic continuum, Updates of plans, maps, and central survey data, Production and deployment of GIS applications, 3D soft plotting (restitution), Topographic surveys and hosting of interactive cartography solutions.

Geo Localized Maps (Indoor/Outdoor Maps) and Data

We have already around 4000 Indoor\Outdoor Maps made which are ready to be converted to any required format or to do any customization. Below are categories of Localized Geo database data sets available at HS Bro. Solutions®, we can also provide customized data according to requirements.

- Indoor Database of Major shopping malls
- Indoor Database of Major Airports
- Indoor Arenas
- Worldwide Database of cell phone antennas

Cadastral Mapping

HS Bro. Solutions – GIS/IT Outsource Services

Having done millions of cadastral plots for different French departments for years, we are experts in cadastral mapping. We provide cadastral mapping for the creation of cadastral maps from hard\scanned copies of the administrative maps with specific details of each plot, roads, etc. These cadastral mapping services provide all-inclusive solutions to land information system problems by focusing on various forms of land records.

Here is the flow of the process:

- Scanning of hard copy maps or received scanned images of maps
- Digitization of the maps using proper layer structure
- Geo-referencing the individual maps
- Merging all the individual maps to a single map

Utility Mapping

Having a great experience of Public Utility Mapping which includes Gas, Sewerage, Electric, Telephone, Water, etc.

This may involve the process of:

- Scanning of hard copy maps or received scanned images of maps
- Digitization of the maps using proper layer structure
- Geo-referencing the individual maps
- Merging all the individual maps to a single map

Web Development

HS Bro. Solutions web development experts take an elegant approach to web development. Our experts develop strategies to move from scratch to end product. We pride ourselves on having experienced web development professionals. We work together to develop your website in a way not only to rank high on the google results pages but also to truly deliver the simplest possible experience to your users. We have a team of experienced front and backend developers. They have expertise in developing fast and robust web development solutions for your digital presence.

We promise you that our team upholds the highest standards in the web development field. Our expert team will develop a highly responsive website as a result maximum conversion on your website can be possible. We offer a good range of web development services having lucrative rates than competitors. Our developers create a site that allows act as an online portfolio website to showcase your services and products. We can assist you with any type of development you need. We are in this field since 2015 but we have an expert team with working experience of more than 10 years. Hire us and avail all kinds of web development services under one roof.

SEO

HS Bro. Solutions – GIS/IT Outsource Services

We Provide you one of the best SEO services everywhere and anywhere. SEO will improve your ranking which in turn attract more audience to your website. As a result, audience will be converted to customers generating revenues and profits. Our team is dedicated and smart working and use latest techniques for SEO. Through our digital marketing skills your business will get boost and convert your business into success.

We will apply all the rules and methodologies needed to rank top on google. Our team has diverse experience of working on business promotions as a result our company progress within no time. We have years of experience in our field and success stories of different brands that had and have been working with us is a brand ambassador of our brand.

We are offering services which includes:

- On/Off page SEO
- Technical SEO
- Keyword research
- SEO Audits
- Local SEO
- Social Media Marketing (SMM)

GPS Navigation Maps

We have already made GPS Map of Pakistan which include all roads and POI while as some 400k addresses of 3 main cities (Lahore, Karachi, Islamabad). So, the team is already experienced in doing navigation maps with accuracy.

CAD Conversion

We offer CAD conversion, creating civil, and architectural maps, and drafting maps from raster images. Our experts have hands-on experience in converting raw data into usable and editable CAD designs. They are skilled and trained to understand the nuances of drawings related to Architecture, Structural Engineering, Civil Engineering, and more. We deliver CAD output files in the format preferred by the client. Our team uses a wide range of CAD software with AutoCAD at the center of them all.

This service includes:

- CAD Vectorization
- CAD Digitization
- Image to CAD Conversion
- Paper to CAD Conversion
- PDF to AutoCAD Conversion
- Raster to Vector Conversion

Data Entry

HS Bro. Solutions – GIS/IT Outsource Services

With the team who is well versed in entering data from any language documents. It takes a common vocabulary of words to understand any document. Data entry activities must frequently be expedited because the recorded data is required for critical business operations - for example, preparing invoices and updating databases. The process of entering data is also time-consuming and requires attention to detail.

To help businesses meet these challenges, we provide following customized data entry services:

- Image Annotation Services
- Online Data Entry
- Real Estate Data Entry
- Image Data Entry
- Data Extraction
- Volume Data Entry
- Internet Research
- PDF/Image Conversion

App Development

We also provide our clients with the option for us to help develop their own mobile application in-house. Our experienced app developers will work round the clock to build your app and will create an app fit to your imagination. After your app is created through us, we can guarantee that it will contain everything needed for it to make waves on the app market. We will guide you through the step-by-step processes in your app's development, along with providing expert marketing strategies to get your app to its users.

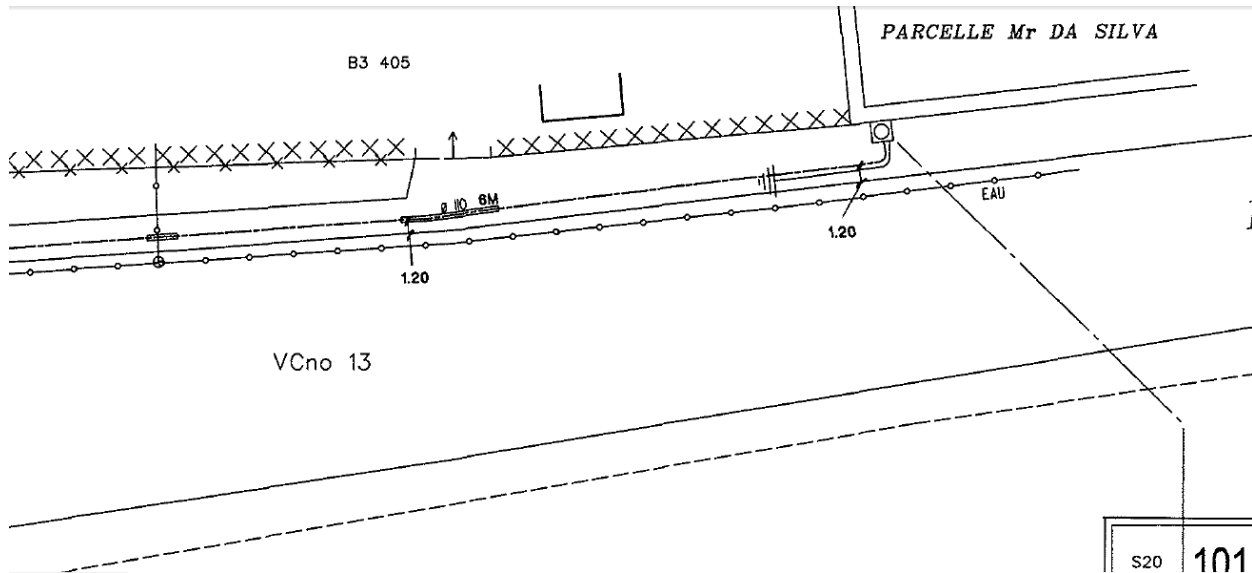
Graphic Designing

We are a team of professional designers who possess experience and expertise in creating eye-catching designs for your brand. As a leading graphic design agency, we put our utmost efforts in making all designs unique and attractive. Our experienced team is capable of managing complex and complicated projects effectively and efficiently. You can share your customized design requirements, and our expert team will make a spectacular design of your vision.

Past/Current Projects

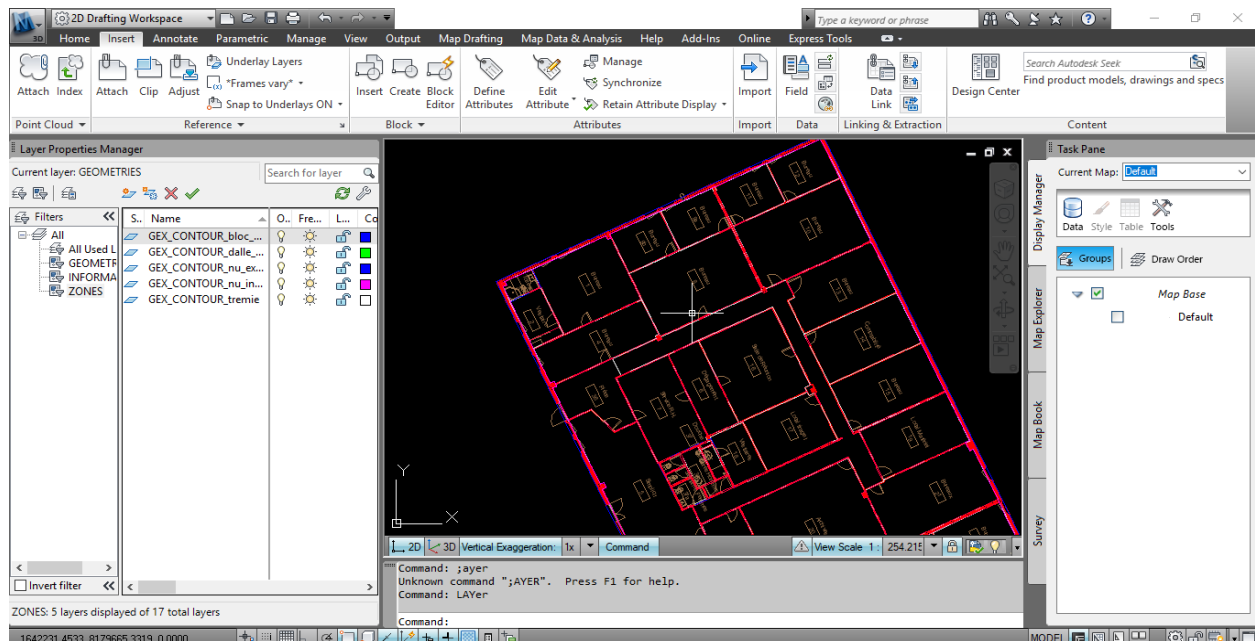
Public Utilities Mapping for Mappia, France: Mar 2019 – Continue

Drawing public utilities by first Georeferencing the scanned image and then vectorized this scan in proper layers.



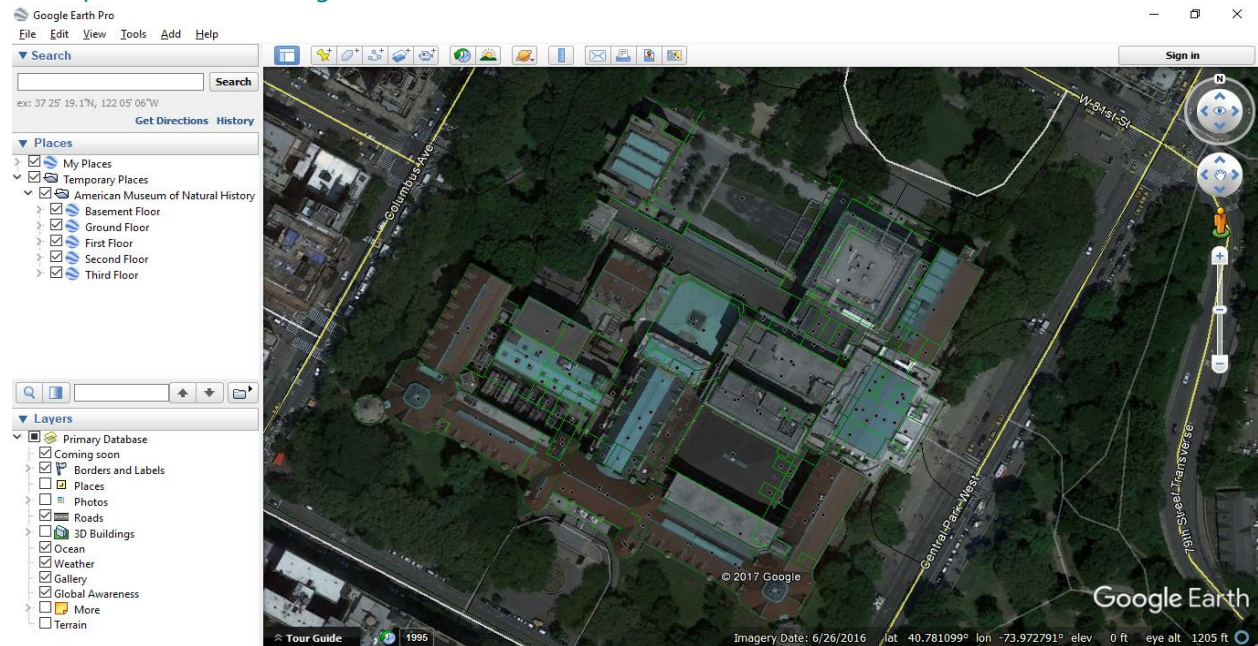
Finalize BIM layers on drawing for GExpertise, France: May 2016 – June 2017

Having done a project which finalizes drawings by creating different layers to make it ready for BIM processing for GExpertise, France.



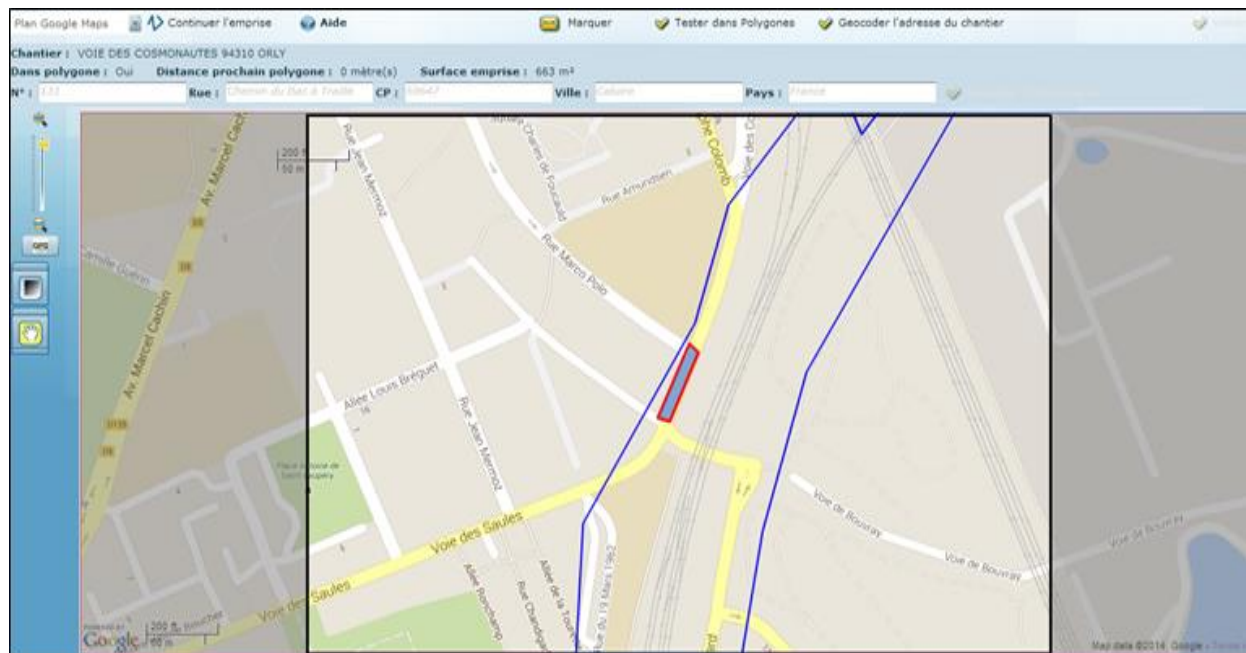
Indoor Venues Digital Maps for Internet Giants (Names Confidential): Sep 2011 – Nov 2015

Made project on indoor venues digitization to generate general digital maps for internet giants help them provide indoor navigation.



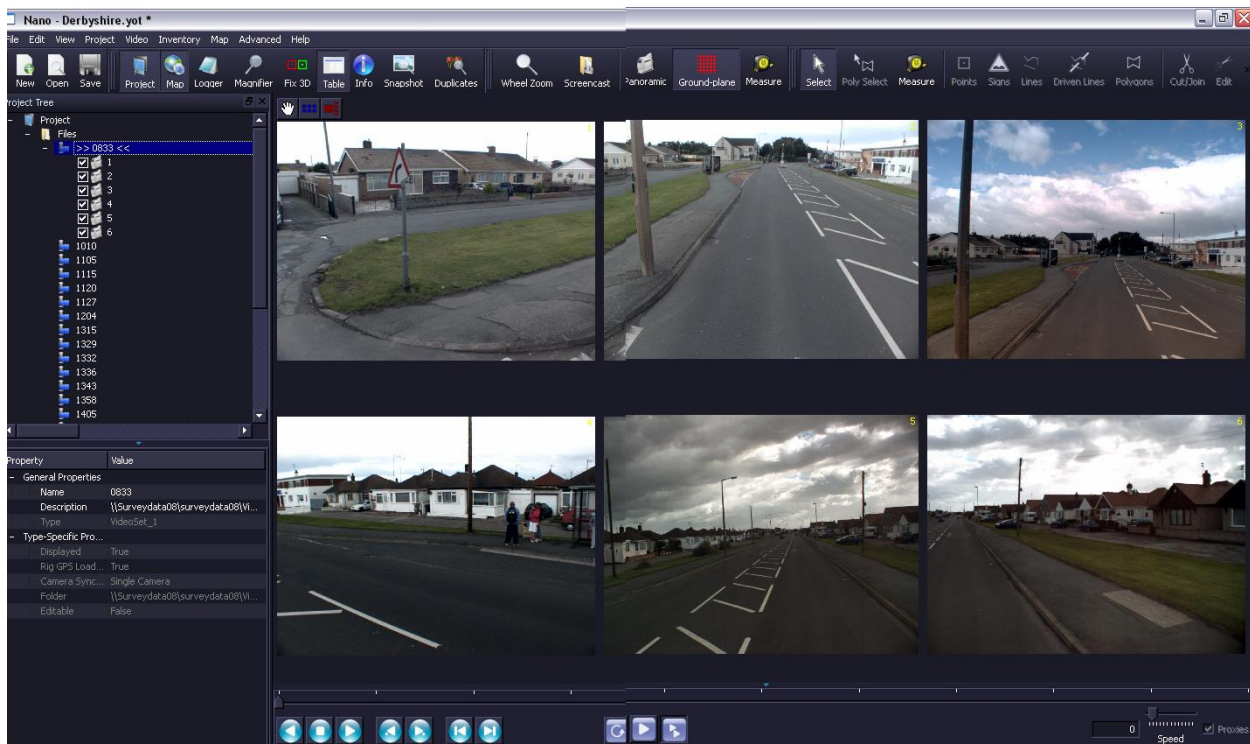
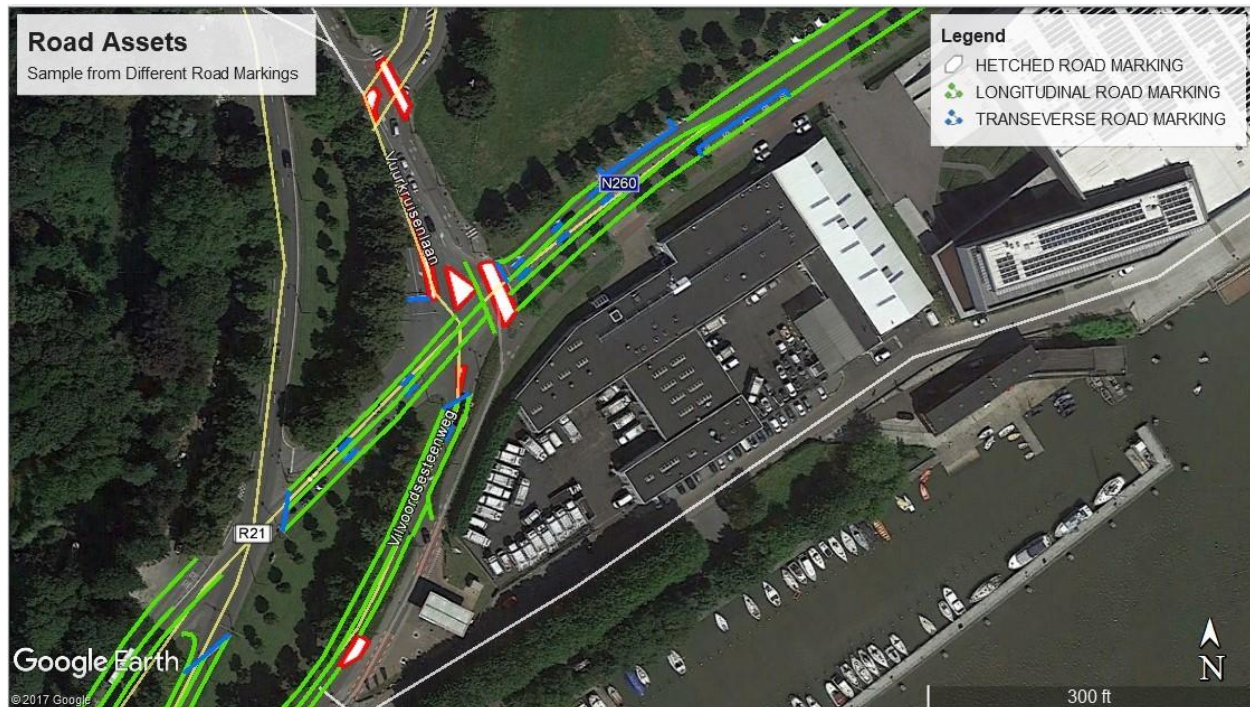
Plan de Synthèse de Réseaux (Utility Mapping) for Sogelink: Apr 2015 – Sep 2015

Made Utilities Network Mapping project named as “Plan de Synthèse de Réseaux” which uses the base map on which network is georeferenced and then digitized to have projected utility network map. The tool was online and production was made at an online site without much fuss.



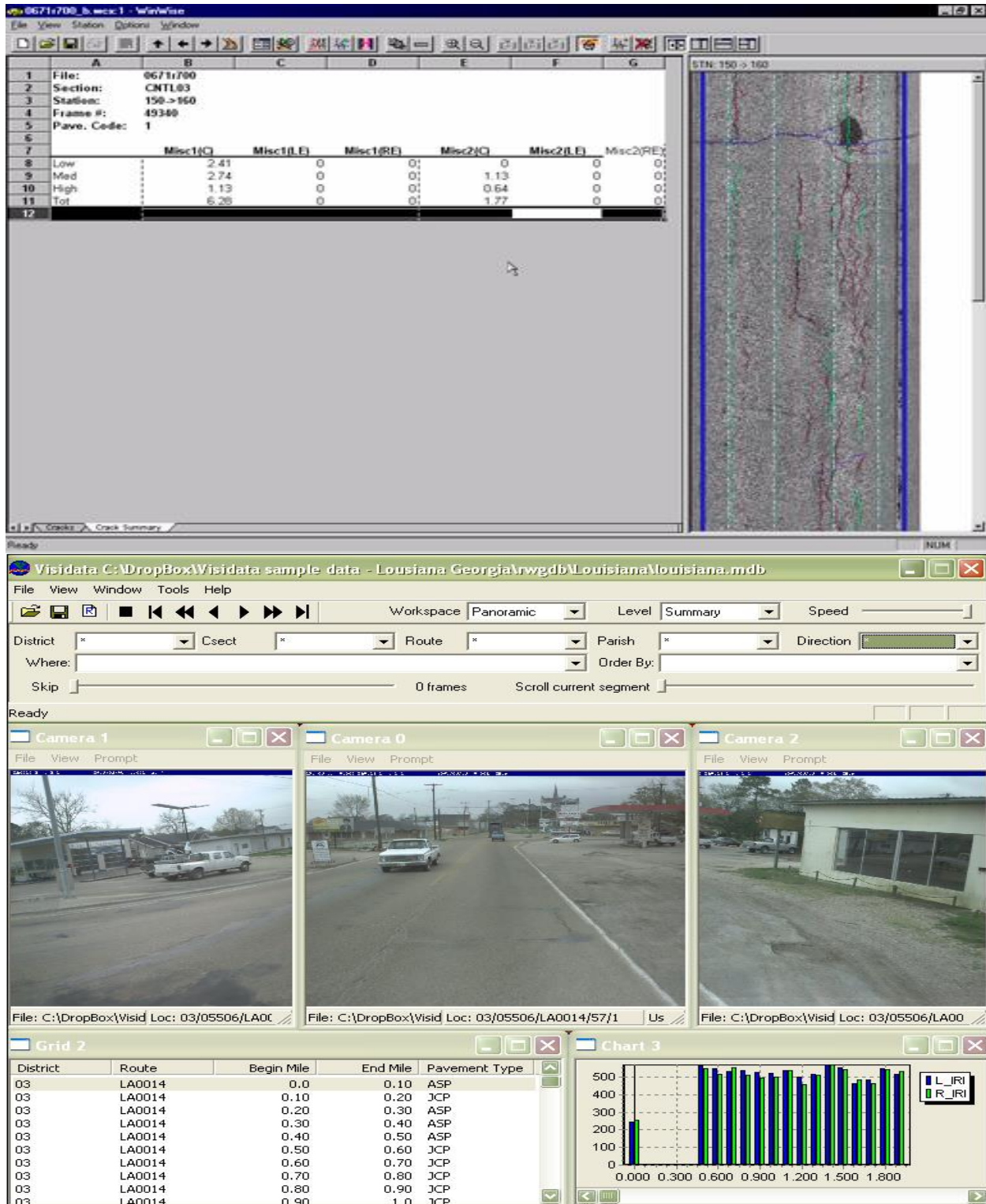
Assets Collection on Road Survey for Yotta, UK: May 2011 – Jun 2012

Made Road Assets Inventory Collection Project using road assets video survey for Yotta UK, which provides their own Software “Nano” along with surveyed videos to make a digital inventory of Road Assets.



Pavements Collection on Road Survey for Fugro Roadware, Canada: Sep 2012 – Jan 2013

Made Road Condition Inventory Collection Project using road video survey for Fugro roadware, which provide their own Software along with surveyed videos to make a digital inventory of Pavement Condition.



HS Bro. Solutions – GIS/IT Outsource Services

French Cadastral/Parcel Mapping for different French departments Jan 2006 – May 2017

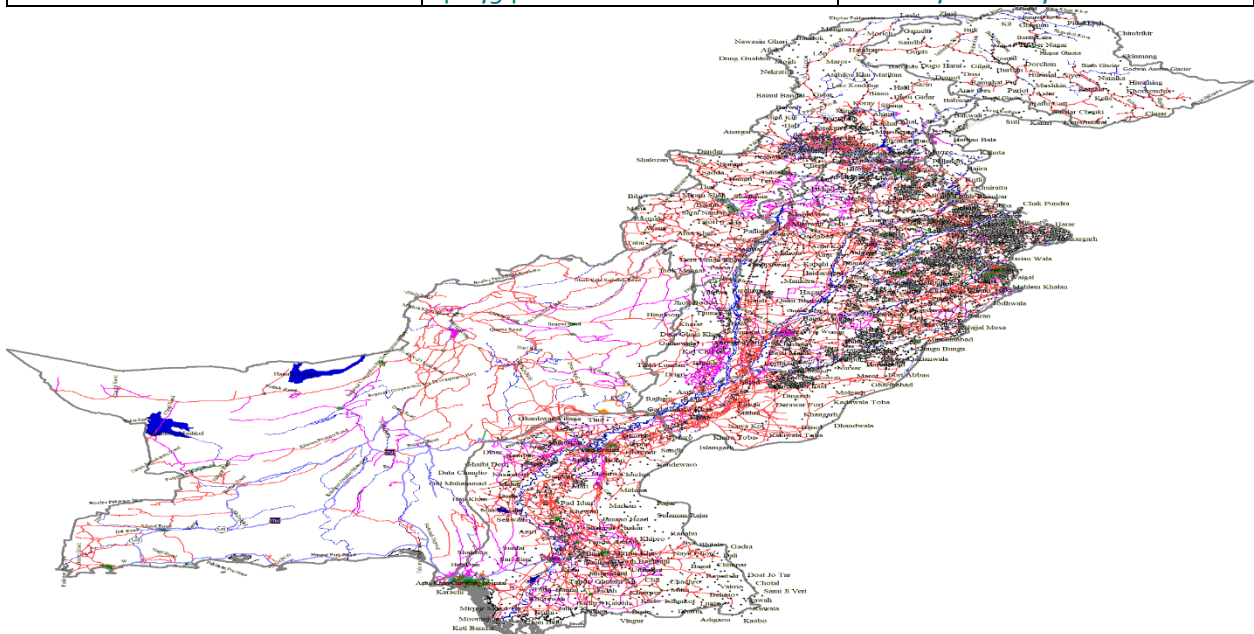
Manage Cadastral parcel digitization for different French departments to build parcel database in order to help them in tax calculation. The process includes Digitization, Georeferencing, Assemblage of Sections.



Pakistan GPS Map with Addresses, POI, Roads and Rivers: Jan 10 – July 11

Have GPS Map of Pakistan which was created for different companies with complete Roads coverage all over Pakistan along with Rivers and POIs. Addresses of Main Cities were also made.

Items	Count (Length/Numbers)	Coverage
Roads	236338 KM	All Pakistan
POIs	51,612	All Pakistan
Addresses	480,541	Lahore, Karachi, Islamabad



HS Bro. Solutions – GIS/IT Outsource Services

Parcel Indexing & Sketching for Yotta MVS, Inc USA (Now Tyler Tech): May 12 – Feb 13

Made Property Appraisal project on Miami-Dade County which includes Parcel document indexing and then Sketching using the online tool "WebSketch" provided for calculation of tax.

Parcel Details

New Parcel

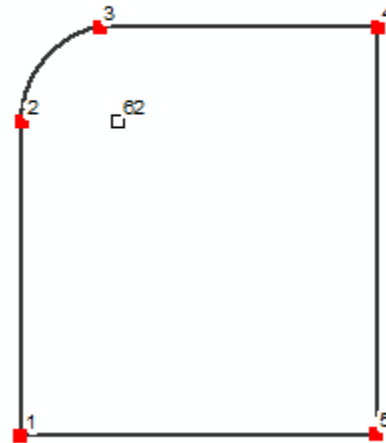
Properties Lines Closure

Plan... Map2303

From	Bearing	Distance	Radius	Arc Le...	To	Category
1	N0°13'00"E	82.260			2	0 Boundan
2	N0°13'00"E		25.000	34.300	3	0 Boundan
3	S89°49'35"E	72.290			4	0 Boundan
4	S0°13'00"W	105.900			5	0 Boundan
5	S89°38'41"W	92.350			1	0 Boundan
					0	Boundan

About entering lines

Misclose: N89°38'41"E 0.007 ftus Acc: 1:52354 Area: 0.2 Report



OCR and Data Entry for Tél and Com, France: Aug 2008 – Dec 2008

Made project on OCR of Tél and Com forms which contain telecommunication contracts and then fill the Database to have digital records of contracts.

Photogrammetry for GEO2000, France Mar 2006 – Sep 2006

Worked on a Photogrammetry project for GEO2000 which by using Aerial Images to convert in 3D using triangulation and draw building boundaries & roof with height using restitution.



Lahore Rapid Mass Transit (LRMT) Rail project Station Design with Systra Aug 2007 – Oct 2007

Help Systra (French Company) for drawing Station Designs maps on AutoCAD with design standards defined by Systra for Lahore Rapid Mass Transit project. Later this project was dropped by next Punjab Government in 2008.

